



**PETZL NIGHT RUNNER, RIVINGTON 2024 – GUIDANCE NOTES**  
**SATURDAY 27<sup>TH</sup> JANUARY 2024**

**Address: Rivington High School, Rivington Lane, Horwich, Lancashire, BL6 7RU**

Thank you for entering Petzl Night Runner Rivington 2024. We're looking forward to seeing you all at Rivington and this document will help to ensure that you have a safe and enjoyable event.

**The route is fully marked with reflective signs, but you will need a good quality head torch or handheld torch to light the track ahead so you can safely navigate around the course.**

**ENTRY CONFIRMATION**

All competitors receive an automatic email from our entry system (Resultsbase) confirming their entry and will be included in the list of participants [HERE](#)

**TERMS AND CONDITIONS OF ENTRY**

The Terms and Conditions of entry are clearly stated on the website [HERE](#) and as part of the entry process it is mandatory for competitors to agree to abide by these Terms and Conditions.

**SWAPPING OF ENTRIES**

Please note that the swapping of entries between competitors is strictly forbidden as it invalidates insurance undertaken by Epic Events to cover the registered participants in the event. If you are unable to race, please follow the instructions outlined in the aforementioned Terms and Conditions

**EVENT PARKING**

Event parking is free at Rivington and Blackrod High School and on the roads adjacent to the School. We cannot guarantee the safety of your possessions and valuables so please ensure that they are locked away safely. **Please try to car share where possible.**

**TOILETS**

Portable toilets will be available near to the Start/Finish area in front of the School.

**TRAVEL**

The post code **BL6 7RU** will bring you to Rivington & Blackrod High School. When arriving please leave enough time to park your vehicle, register and to get to the start. Please also ensure your head torch is charged and working. The walk to the start will be dark.

**REFRESHMENTS ON SITE**

The Crazy Cow catering van will be at the event and will be open all evening, serving hot/cold drinks, food and snacks.

### **COMPULSORY KIT**

Headtorches or handheld torches are mandatory kit.

And you must either wear or carry a windproof jacket with you for the duration of the event - parts of the course are exposed to the weather and this kit requirement is for your safety.

### **TIMETABLE & EVENT SCHEDULE**

- 16:30 - Car park opens
- 16:30 - Registration & Refreshments open
- 17:35 - Briefing and warm up Trail Kidz 1k (under the Start/Finish Arch)
- 17:40 - Start of Trail Kidz 1k Run
- 18:20 - MANDATORY Event Briefing for 10k Night Runner competitors (Start/Finish Arch)
- 18:30 - Start of Night Runner 10k
- 20:00 - Prize Presentation at the Start/Finish Arch

### **REGISTRATION**

Registration for Petzl Night Runner Rivington will open at 16:30pm and closes at 18:20pm on the Saturday. Registration for Trail Kidz 1k will be in a separate area and will open at 16:30pm and close at 17:30pm.

Registration will be **extremely busy** so please allow extra time to ensure you get through registration stress free. Registration will take place at the large Event Shelter on the 'all weather' sports pitch adjacent to the Start/Finish area. Participants are required to show photo ID and collect your competitor t-shirt (if you have ordered one) and race number/chip.

### **EVENT T-SHIRTS**

Custom designed Event T-shirts are pre-ordered only – if you have not already ordered a T-Shirt with your entry then it is unfortunately not possible to add a T-Shirt at this stage. If you find your pre-ordered T-shirt is the wrong size, please ask at the finish area after you have finished your race. We cannot guarantee we have the size that you need but will accommodate the best we can with the T-shirts remaining.

**Please Note – Event T-shirts cannot be purchased on the day.**

### **NUMBER AND TIMING CHIP COLLECTION**

Collect your event number, pin it to the front of your running top and ensure it is **always visible**. **DO NOT MANIPULATE OR FOLD YOUR NUMBER IN ANY WAY.**

Your timing chip will be attached to the back of your bib number. You do not need to hand this back at the end of the event.

### **EVENT BRIEFING**

The Event Briefing is **MANDATORY** – if any final changes to the route and event are required they will be announced at the briefing, therefore you must ensure that you are present at 18:20pm.

**The briefing will take place under the Race Arch at Start/Finish Area.**

### **START**

The Petzl Night Runner Rivington 10k starts at 18:30pm. The race will start immediately after the race briefing from under the Start/Finish arch.

### **FINISH**

You will finish under the Finish Arch where you will then be presented with your custom 'Glow in the Dark' medal.



**THE**  
**Endurance Store**

Swim – Run – Triathlon  
Mossy Lea Road, Wrightington, Wigan, WN6 9SA  
[www.TheEnduranceStore.com](http://www.TheEnduranceStore.com)

## **ROUTE**

The route will be marked by yellow 'run route' arrows with reflective tape on them.



As torch illuminate signs, the reflective tape will reflect in a similar way to 'cat's eyes'.

There will be marshals at all the major turns on the route.

Please respect the surroundings and residents and do not drop litter. A copy of the route can be downloaded from the event web page and is also enclosed in these notes (see the "useful information" section).

To view the Strava Route for Petzl Night Runner Rivington 10k [CLICK HERE](#)

## **RESULTS**

Provisional results are available online immediately as runners cross the Finish Line from the Epic Events Website [CLICK HERE](#)

Any queries relating to provisional results posted on the web must be e-mailed to [info@epicevents.co.uk](mailto:info@epicevents.co.uk) within 48hrs of the event, after which time all results will be deemed as final and complete.

## **PRIZE PRESENTATION**

Please join us for the Prize Presentations at 20:00hrs at the Start/Finish Area.

Prizes will be awarded to the 1<sup>st</sup>, 2<sup>nd</sup> & 3<sup>rd</sup> Male and Female Runners overall and 1<sup>st</sup> M/F V40/50/60+.

Runners must attend the presentation to collect their prize as prizes will not be posted out following the event.

## **MEDICAL ADVICE**

If you have any known medical condition (such as diabetes, asthma, allergy to penicillin, etc.) please ensure you have informed us prior to the race on your application.

Following registration when you have been issued with your race number, please write any medical conditions including any medication taken on the back of your race number along with a next of kin name & emergency contact details – then please add a small red cross on the front of your number.

This is not just an administrative request; it could be a matter of life and death in an emergency. This information will only be used in the event of runners requiring medical treatment.

Whether you have a medical condition or not, if you feel unwell on race day, don't race!

If you require assistance, suffer an injury or a medical issue please notify the nearest marshal or ask another competitor to do so, the marshal will then notify the Event Medical Team who will assist.

**EMERGENCIES**

During the race, should you come across another competitor who needs assistance please inform the nearest marshal. There will be Medical cover on the course and at the Start/Finish area.

**TRAIL KIDZ**

- Registration for the free Trail Kidz 1k race will open at 16:00hrs and close 17:30hrs. There will be a separate registration tent/table for the Trail Kidz 1k event. Registration is on the night only. At registration, all children will be given a race number and a glowstick.
- The Trail Kidz briefing and warm up for all participants will be at 17:35 under the start gantry.
- The Trail Kidz start will follow the briefing and will be under the gantry at 17:40.
- Medals will be given to all Trail Kidz finishers.

**FANCY DRESS**

Running in fancy dress is not compulsory, but it is very much encouraged. The theme for our final Petzl Night Runner event is "Close Encounters" and anything UFO/Alien related due to the propensity of UFO sightings in and around the Rivington Pike area.

**Finally**

Thank you for entering the Petzl Night Runner Rivington. We hope you enjoy your night and the course we have prepared for you. We wish you the best of luck!!

Regards

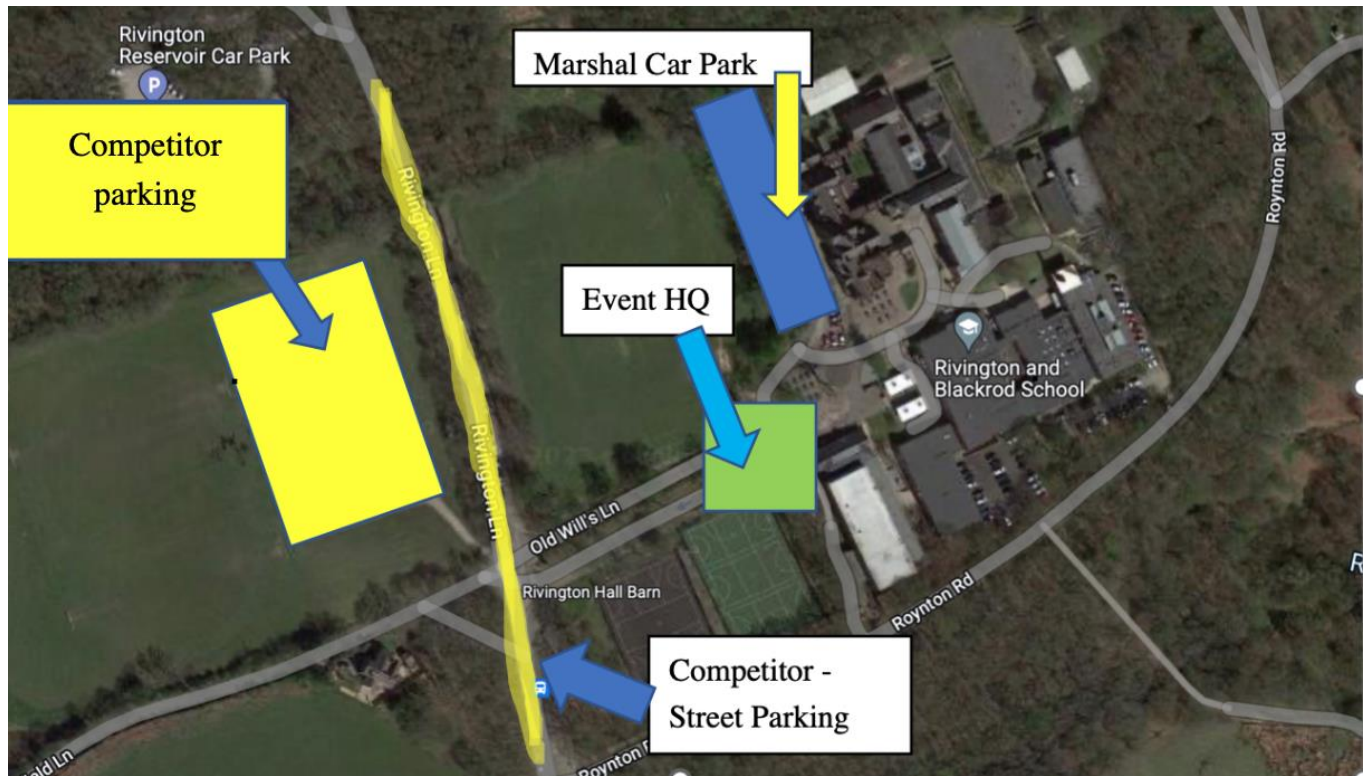
Petzl Night Runner Team

<http://www.epicevents.co.uk/>

[info@epicevents.co.uk](mailto:info@epicevents.co.uk)

USEFUL INFORMATION

CAR PARK LOCATION & EVENT LAYOUT:



There will be Car Park Marshals in place on the night who will tell you where to park. There will also be signs in place on the road directing you to the Car Park. Please follow the highway code when parking on the road side.

ROUTE MAP



The course is a single clockwise loop and can be viewed on Strava by [CLICKING HERE](#)