



PETZL NIGHT RUNNER, RIVINGTON

Full Address: Rivington High School, Rivington Lane, Horwich, Lancashire, BL6 7RU

ENTRY CONFIRMATION

All competitors have been automatically forwarded an email confirming their entry and will be on the current entry list, displayed on the event web page.

TERMS AND CONDITIONS OF ENTRY

Terms and conditions of entry are clearly stated on the website <http://www.epicevents.co.uk/>. In making the application competitors have agreed to abide by these terms and conditions.

SWAPPING OF ENTRIES

Please note that the swapping of entries between competitors is strictly forbidden as it invalidates insurances undertaken by the organisers to cover the event. If you are unable to race, please follow the instructions outlined in the terms and conditions on the <http://www.epicevents.co.uk/> website.

EVENT PARKING

Event parking is free at Rivington and Blackrod High School and on the roads in front of the School.

We cannot guarantee the safety of your possessions and valuables so please ensure that they are locked away safely.

Please try to car share where possible.

TOILETS

Portable toilets will be available near to the Registration area.

TRAVEL

The post code BL6 7RU will bring you to Rivington & Blackrod High School.

When arriving please leave enough time to park your vehicle and get to the start.

Please also ensure your head torches are working. The walk to the start will be dark.

REFRESHMENTS ON SITE

The Crazy Cow catering van will be at the event and will be open all evening, serving hot/cold drinks, food and snacks.

COMPULSORY KIT

You must either wear or carry a windproof jacket with you for the duration of the event.

Parts of the course are exposed to the weather and this requirement is for your safety.

TIMETABLE: EVENT SCHEDULE

- 17:00 - Car park opens
- 17:00 - Registration & Refreshments open
- 18:05 - Briefing and warm up Trail Kidz 1k (under the start gantry)
- 18:10 - Start of Trail Kidz 1k
- 18:50 - Compulsory Event Briefing for 10k

- Night Runner competitors (start gantry)
- 19:00 - Start of Night Runner 10k
 - 20:30 - Prize Presentation

ON THE NIGHT

Registration for the Petzl Night Runner 10k will open at 17:00 and close at 18:30.

Registration for Trail Kidz 1k will be in a separate area and will open at 17:00 and close at 17:55.

Registration will be extremely busy so please allow extra time to ensure you get through registration stress free.

Registration, for all competitors, will take place in the marquee within the tennis courts.

REGISTER

Competitors to show reliable ID to prove it's you and collect your competitor t-shirt, race number and timing chip.

NUMBER/TIMING CHIP COLLECTION

Collect your event number and pin it to the front of your running top and ensure it is visible at all times. Your timing chip will be attached to the reverse of your race number. Please don't manipulate your race number as it might damage the timing chip.

EVENT BRIEFING

The Event Briefing is **compulsory**. Last minute changes to the route and event will be announced at the briefing only therefore you must ensure that you are present at 18:50hrs.

The briefing will take place under the start/finish gantry.

START

The Petzl Night Runner starts at 19:00. The race

will start immediately after the race briefing from underneath the start/finish gantry.

FINISH

You will finish under the finish gantry where you will be presented with your finishers medal and bottle of water whilst we will remove your timing chip (DO NOT LEAVE UNTIL YOUR CHIP HAS BEEN REMOVED).

ROUTE

The route will be marked by yellow 'run route' arrows with reflective tape on them.



As you shine your torch at the sign, the reflective tape will reflect in a similar way to 'cat's eyes'. There will be marshals at all the major turns on the route.

Please respect the surroundings and residents and do not drop litter. A copy of the route can be downloaded from the event web page and is also enclosed in these notes (see the "useful information" section).

The Petzl Night Runner Course:

<https://www.strava.com/routes/3371069>

RESULTS

A set of provisional results will be available to download immediately after your race from <http://www.epicevents.co.uk/>.

Any queries relating to provisional results posted on the web must be e-mailed to info@thenightrunner.com by Monday following the event, after which time all results will be deemed as final and complete.

Endurance Revolution



Swim * Cycle * Run
#EnduranceRevolution

PRIZE PRESENTATION

Please join us for the prize presentation at 20:30hrs. Prizes will be awarded to the 1st, 2nd & 3rd male and female runners overall and 1st M/F V40/50/60.

You must attend presentation to collect your prize. Prizes will not be posted out following the event.

MEDICAL ADVICE

If you have any known medical condition (such as diabetes, asthma, allergy to penicillin, etc.) please ensure you have informed us prior to the race on your application.

Following registration where you will be issued with your race numbers, please write all medical details including any medication taken on the back of your race number as well as next of kin & emergency contact details and put a small indelible red cross on the front of your number.

This is not just an administrative request; it could be a matter of life and death in an emergency.

This will only be used in the event of you being involved in an accident. Whether you have a medical condition or not, if you feel unwell on race day, don't race!

In case of injury or emergency please notify the nearest marshal or ask another competitor to do so, the marshal will notify the Event First Aid Team who will assist.

EMERGENCIES

During the race, should you come across another competitor who needs assistance please inform

the nearest marshal. There will be first aid cover on the course and at the start/finish area.

TRAIL KIDZ

Registration for the free Trail Kidz 1k race will open at 17:00hrs and close 17:55hrs. There will be a separate registration tent/table for the Trail Kidz 1k event. Registration is on the night only. At registration, all children will be given a race number and a glowstick.

The Trail Kidz briefing and warm up for all participants will be at 18:05 under the start gantry.

The Trail Kidz start will follow the briefing and will be under the gantry at 18:10.

Medals will be given to all Trail Kidz finishers.

FANCY DRESS

Running in fancy dress is not compulsory, but it is very much encouraged. The theme for our final Petzl Night Runner event is "Close Encounters".

Finally

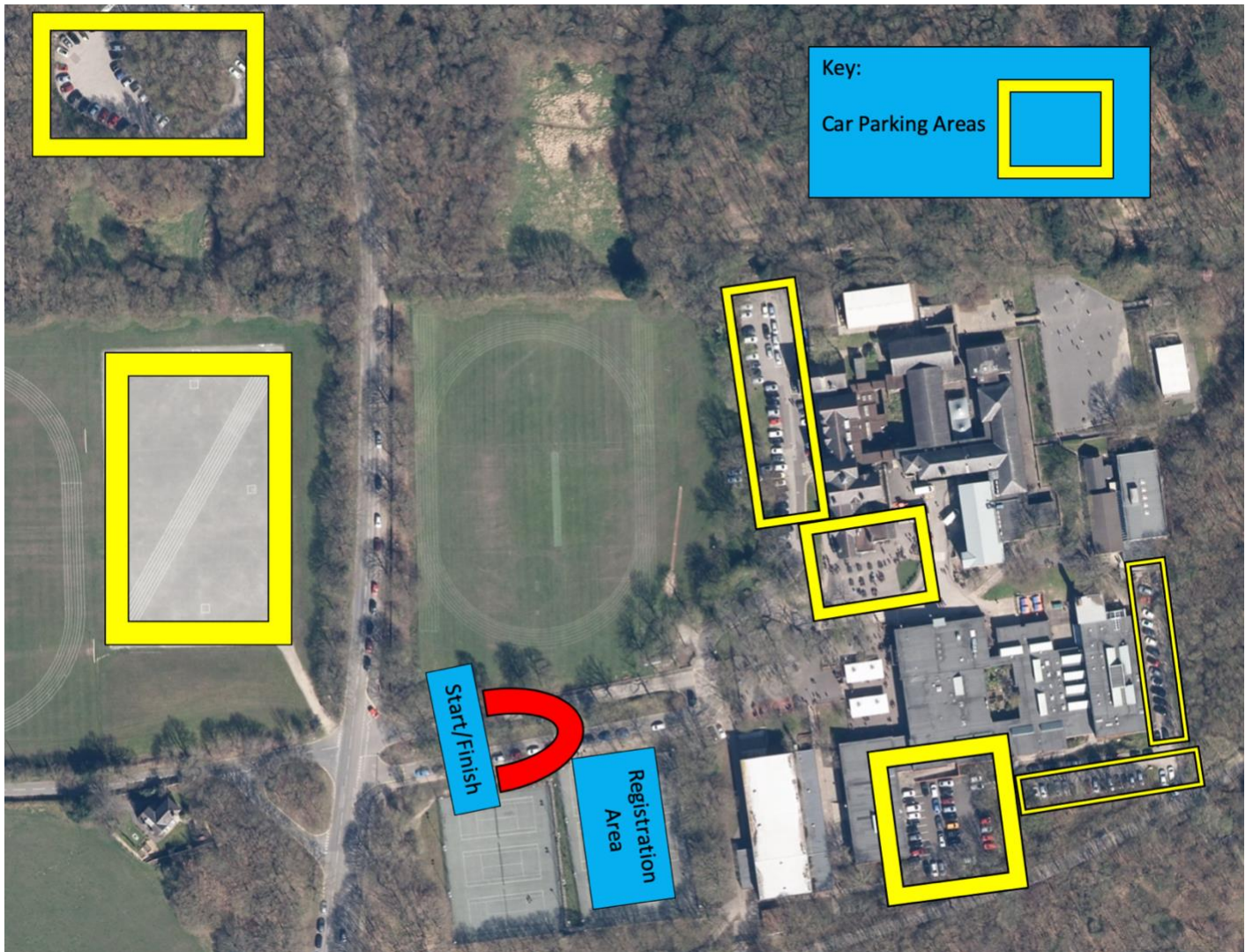
Thank you for entering the Petzl Night Runner, Rivington. We hope you enjoy your night and the course we have prepared for you. We wish you the best of luck!!

Regards

Petzl Night Runner Team
<http://www.epicevents.co.uk/>
info@epicevents.co.uk

USEFUL INFORMATION

CAR PARK LOCATION & EVENT LAYOUT:



There will be Car Park Marshals in place on the night who will tell you where to park. There will also be signs in place on the road into the School directing you to the Car Parks.

ROUTE MAP



The course is a single clockwise loop. You can access the online version of the course here:

<https://www.strava.com/routes/3371069>